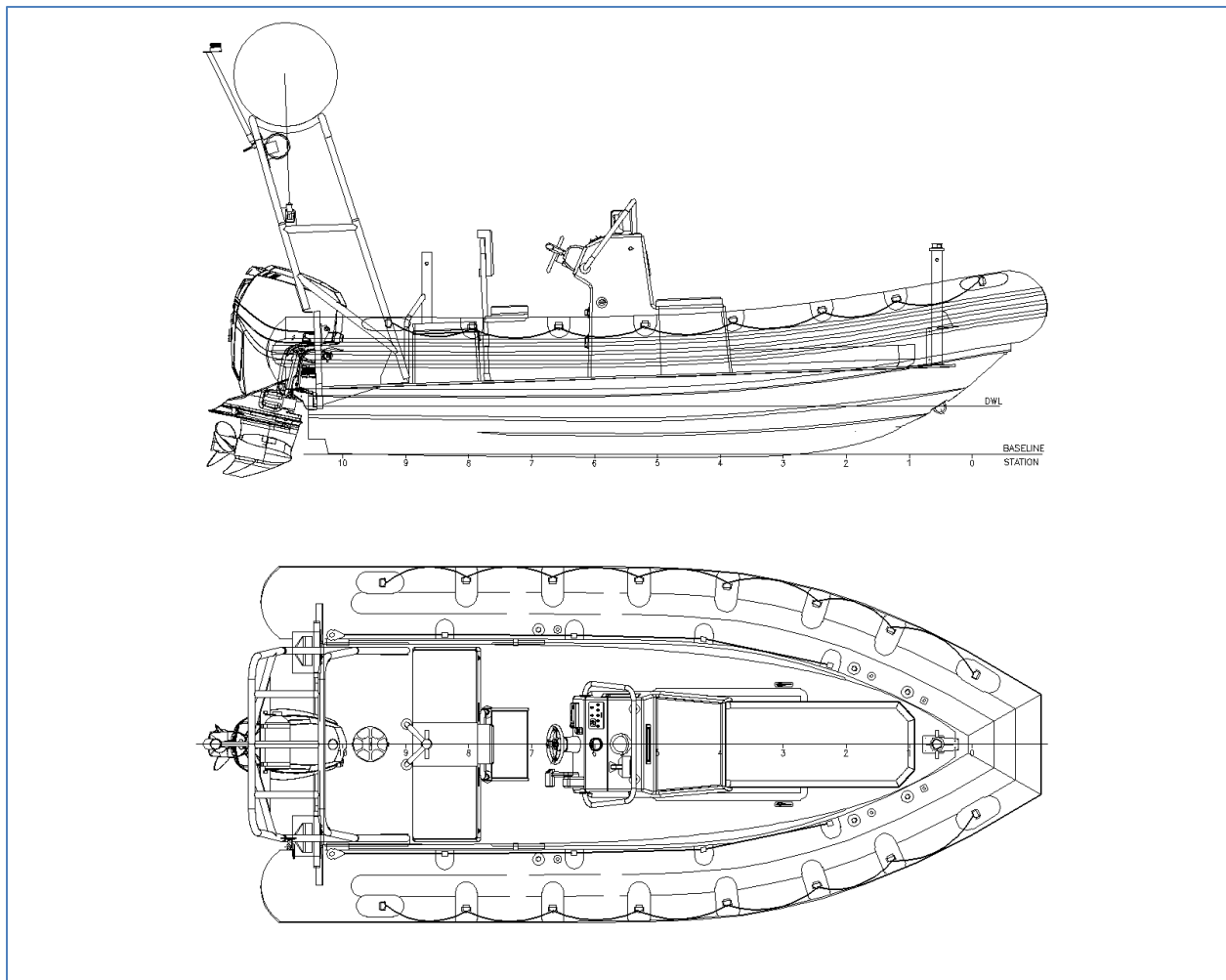
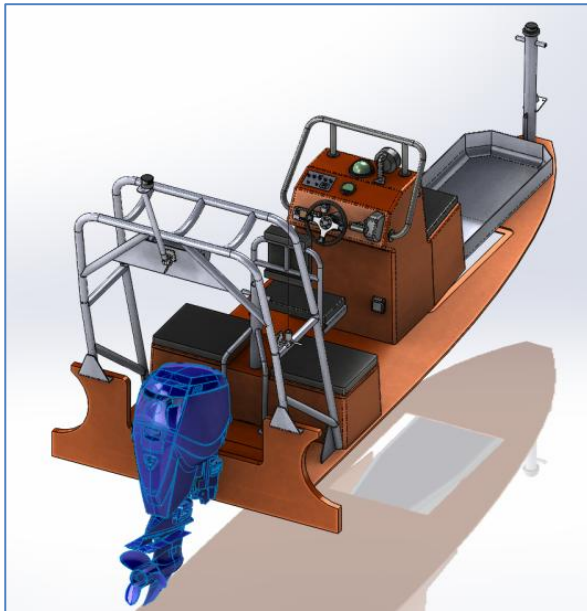


Willard Marine, Inc., is proud to be the only American designer and manufacturer of Safety of Life At Sea (SOLAS) rescue boats, which are built under ABS inspection, rigorously tested and certified by the United States Coast Guard. Emergency services, rescue agencies, commercial shipping companies and other organizations appreciate the speed, stability and maneuverability of Willard Marine SOLAS boats in the most challenging rescue operations.

Currently available are the Willard Marine 490 and 670 SOLAS Rescue Boats. In development now are the 590 and 540, the latter of which is featured in the line drawing below:



Willard Marine was founded in 1957 and has a rich history of designing and manufacturing vessels for the United States government, as well as commercial clients and consumers. We are ISO 9001:2008 certified and committed to providing quality products on time that exceed customer expectations. We maintain an aggressive Quality Control program, including stringent scheduling, quality and on-time/on-cost delivery standards.



IN DEVELOPMENT - 540 SOLAS Rescue Boat – EXPECTED SECOND QUARTER 2015

GENERAL CHARACTERISTICS		
Overall Length, ex-engine	5.49 meters	18' – 0"
Length, Molded Hull	4.95 meters	16' – 4"
Overall Beam	3.61 meters	8' - 2"
Beam, Molded Beam	1.98 meters	6' – 6"
Condition A Weight	712 kg	1,570 lbs
Condition B Weight	1,315 kg	2,900 lbs

HULL AND DECK
E-glass with fire-retardant polyester resin
Orange (other colors available upon request)
Self-bailing deck with elephant trunk deck scuppers
Non-skid decks with 3M Safety-Walk. All non-skid edges are sealed with 3M Edge Seal
Sacrificial zinc anode
Aft stowage box for rescue equipments w/ cushioned seats
Forward mooring bitt, aluminum

(HULL AND DECK CONTINUED)
Centerline aft tow post
Bow and stern eyes, stainless steel
Painter fittings, stainless steel
Self-righting system (stern A-frame, righting bag, cylinder), manual release
Standard single-point 4-legged polyester sling and stainless steel fittings

PROPULSION SYSTEM
Yamaha F90 four-stroke outboard engine (USCG approval pending)
Binnacle control head, multifunction gauge
Propeller guard, stainless steel

COLLAR SYSTEM
WING inflatable tube with 8 inch black PVC substrate; inboard and outboard lifelines
Tube diameter: 20 inches
Tube material: 40 oz polyurethane with UV coating, 5 compartments, color Orange
Sewn-in retro-reflective SOLAS tapes
Boat hook and paddle holders
Painter attachments

FUEL SYSTEM
20-gallon ¼ inch thick 5086 aluminum fuel tank
Wema fuel sending unit wired to engine multifunction gauge
Yamaha stainless steel head fuel/water separator
EPA Compliant

CONSOLE
Stand-up with wrap around grabrail and windshield
USCG approved compass
Forward cushioned seats
Navigation horn, electric



RIGGING AND ELECTRICAL
Accessory 12-volt power receptacle
Two Optima dry cell 12V battery with switches and battery boxes
Toggle style marine grade circuit breakers and switches
Running lights (all-round white and combination side lights)
Hydraulic steering with 14-inch steering wheel
Electric bilge pump, 1100 GPH with mercury-free float switch
VHF marine band radio w/ 3 dB whip antenna
Voltmeter and fuel level gauge
Battery charger, boat mounted wired to shore power inlet

OUTFIT ITEMS/ SOLAS RESCUE EQUIPMENTS	
Boarding ladder, 3-steps	Thermal protective aids (2)
Paddles (2)	Fire extinguisher, 2.6 lbs
Bailer	Boat hook, floating
Sea anchor w/ 10 meter line	Bucket, 2-gallons
Painter tow assembly w/ release hook	Knife, buoyant
Towline, 50 meters	Bailing sponge
Flashlight	Tube inflation pump
Spare batteries and lamp	Tube repair kit
Whistle	Manual bilge pump w/ strainer
First aid kit, USCG approved	Radar reflector
Heaving line w/ quoit on one end	Searchlight
Shore power cord, 50-feet	Perform sea trials and copy of Test Certificate
Shipping cradle and shrink wrap	

OPTIONS
Over-the-road galvanized steel trailer; overseas shipping compliant cradle; and boat markings

Our advisors can help you choose the precise model and equipment most suitable for your needs. Please contact us at (714) 666-2150, or email us at info@willardmarine.com.